

DNSBOX200

HIGH PERFORMANCE, HIGHLY AVAILABLE DHCP SERVER

DNSBOX200 is an advanced DNS slave, recursive resolver (DNS cache) and DHCP server for high performance and security needs. It can be licenced and deployed as a highly available and powerful dedicated DHCP server that is guaranteed to give you the performance demanded by today's networks.

You just want to fix a DHCP headache – or several. But standard Microsoft or ISC DHCPd solutions can be unsatisfactory...

Ensuring a reliable, highly available service by implementing DHCP failover is either difficult or impossible, depending on which tool you are using:

- Setting up a reliable failover mechanism is the #1 issue in enterprises managing networks of PCs, notebooks, and IP phones.

For others, the key issue is performance, needing to handle large numbers of DHCP leases:

- This is typically the priority for service providers.
- As BYOD schemes and IP phones scale the numbers of devices connecting dynamically, it is increasingly also an issue in other organisations.

In all environments, the difficulty of deploying and administering DHCP results in heavy workload and increased operating expense:

- DHCP admin and troubleshooting is manual, time-consuming and error-prone.
- Server upgrades and software updates are laborious and involve complex configuration.

DDI appliances in general help solve DHCP problems. However if you are just focused on DHCP and need a high availability or high performance solution:

- An integrated DDI solution is too much - overcomplicated and unnecessarily expensive.
- DHCP servers using Microsoft or ISC DHCPd will leave you with headaches on performance, failover and complex admin.

DNSBOX200 is ideal – a fit for purpose DHCP appliance that eliminates DHCP headaches and simplifies day-to-day management routines while providing high availability. It gives you the performance you need to handle a large number of DHCP leases, and can easily be scaled as this requirement grows.

It is easy to deploy, and comes in a variety of hardware models making it suitable for most DHCP requirements.



If you have a requirement for multiple remote DHCP servers, you can easily integrate with IPAM on the **DNSBOX400** and control them from a central place.



DHCP configuration simplified

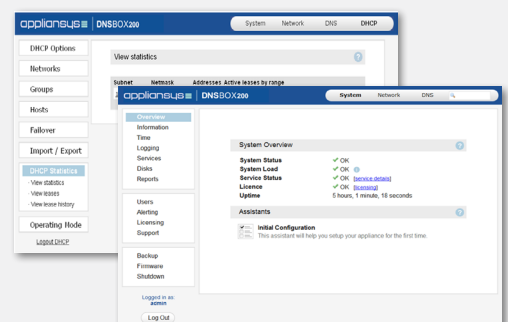
- Inbuilt automation and validation tools
- Reports on live and historic DHCP usage
- Support for custom configurations such as VoIP/IPT devices, mobile devices
- Dynamic DNS support for DHCP-DNS integration

Easy, automated DHCP failover

- Simple to set up DHCP failover pairs
 - Data replicated to secondary active unit
 - Configuration automatically shared between servers
 - Address availability and information about current leases dynamically shared
- Easy upgrade without service disruption

Appliance Benefits

- No headaches, no hassles: Plug-and-play, easy to administer
- Improves visibility & control of IP usage
- Slashes cost of ownership; offers high ROI
- Inherently better than a general-purpose server:
 - Greater reliability and security
 - High level of resilience and availability
 - Dedicated server: better performance



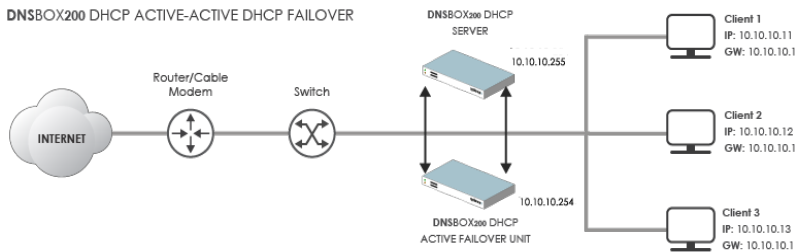
High Availability Failover

For environments that demand high availability and redundancy, **DNSBOX**'s DHCP solution allows you to easily set up and deploy a failover unit.

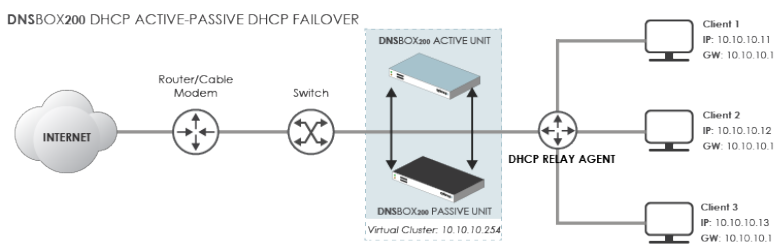
DNSBOX200 failover pairs share configuration, ensuring that they never 'disagree' about the network. They also dynamically share the available addresses, and information about current leases.

This can be set up in a few simple clicks with two options to suite different network topology and requirements..

1. Active-Active mode where the pool of available addresses is split between two active DHCP servers.



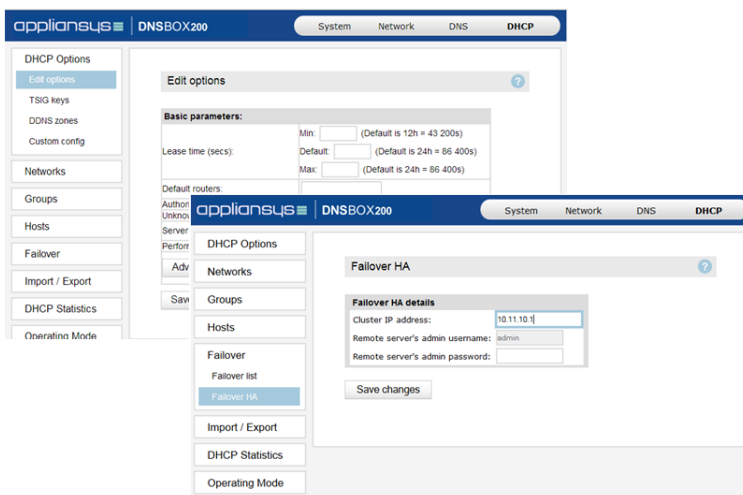
2. Active – Passive mode ensures high availability in networks with DHCP relay agents such as B-RAS. It is achieved by clustering a pair of DHCP servers on a single virtual IP address. A passive server copies information about the leases distributed by the active server in real time.



Easy Administration

DNSBOX200 simplifies all your day to day DHCP administrative headaches...

- Informative DHCP statistics give you full visibility of the service, allowing you to easily search for leases, hosts, zones and IP ranges.
- You can easily edit subnets without worrying about config errors – inbuilt validation takes care of it all.
- Help is built in to the user interface to guide you every step of the way.



DNSBOX200 - Key Features

Easy to Use

- Simple, intuitive interface
- Configure from any browser, anywhere
- Import/export option for easy backups
- Copy changes between servers
- One click upgrade with rollback functionality
- Easily configuration for different scenarios such as DHCP relay agents, APIs and IPv4/6

Simple DHCP Administration

- Automated validation of DHCP configuration
- Custom configuration fields
- View live and historic DHCP lease data
- Automate creation and editing of subnets, leases and views
- Group hosts, subnets and networks
- Automated log rotation
- Comprehensive monitoring, reporting & alerting
 - System health monitoring
 - SNMP/Syslog monitoring
 - SMS and email alerts

Appliance Security and Reliability

- Integrated firewall
- Built-in user authentication
- 10x more reliable with solid state storage
- Dual CompactFlash cards - program and data
 - Give you faster boot times
 - Can easily be ejected to retain all settings
- Customised Linux OS
- Support for all DHCPD options
- Easily set up failover mechanism

Expandable solution

- Integrates seamlessly with **DNSBOX300** or **DNSBOX400** for a complete solution
- Upgrade support for new services: authoritative DNS, recursive resolver / DNS caching
- IPv6 and DHCPv6 support

Technical Specifications

	DNSBOX210	DNSBOX220	DNSBOX230
DHCP Performance		Up to 500 LPS	Up to 710 LPS
Ethernet (NICs)		2 x 10/100/1000	
Flash Storage		1 x OS, 1 x data	
DHCP Storage		SSD	
Dimensions	19" (482.6mm) x 1.75" (44.45mm) x 10" (254mm)	19" (482.6mm) x 1.75" x (44.45mm) x 17" (432mm)	