

CACHEBOX solutions for enterprises



OVERVIEW

As an enterprise, your users expect fast, dependable internet access for research, communication and collaboration.

Enterprise networks are under increasing pressure as employees and/or customers access bandwidth-hungry content:

- online videos
- large pdf documents
- social networks
- news portals
- large software updates

Whether they want a faster, more reliable service, need to support more users or keep costs down, organisations benefit from deploying web caches in their network:

- Where bandwidth is scarce and expensive web caches offer significant cost savings; payback is rapid and return on investment very high.
- When high capacity is relatively inexpensive, caching helps to deal with the inevitable pressure to support larger videos, more social media and heavier software updates. Optimising HTTP content frees capacity for this additional, often high priority traffic.

CACHEBOX is a range of purpose-built web cache appliances designed to save your bandwidth and speed up internet access. Customers in over 110 countries choose **CACHEBOX** because it delivers high performance caching, ease of use and outstanding value for money:

- A large pharmaceutical vendor can provide employees with fast internet despite expensive bandwidth
- A hotel chain increased its profit margins for guest internet access
- A 15-site electrical equipment distributor offers employee training videos, and controls the sites accessed by them

- A Mediterranean cruise ship operator improved user experience for passengers
- An international chain of casinos shows videos on hundreds of slot machines at once
- A remote mining camp operator provides better internet access to off-shift workers.
- A retail chain streamlined delivery of in-store advertising videos

BENEFITS

Improve user satisfaction

Serving web content from a local cache dramatically improves load times, transforming user experience. Enterprises spend less time dealing with bandwidth related support issues, ensuring that employees have the internet access they need to remain productive, even at remote branch offices.

Make better use of video

The growing use of video in the workplace and retail outlets has caused difficulties for many enterprise networks. **CACHEBOX** reduces the amount of bandwidth consumed by popular sites like YouTube and Vimeo. Use video training materials or deliver in-store advertising with

confidence - no worries about slow download speeds or adding to congestion.

Software updates without the pain

Windows, Apple or Adobe updates are often enormous files that can swamp a network when they are due. **CACHEBOX** takes all that pressure off your internet connection.

Serve more guests, at a lower cost

Lower bandwidth use keeps your costs low because you don't have to upgrade to more expensive links. Hotels, retail outlets and internet cafes can provide more customers with reliable and profitable internet services.

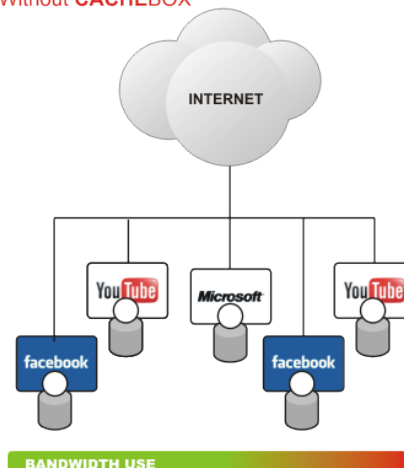
Control what your employees access

CACHEBOX works alongside third party content filters and lets you authenticate users against MS Active Directory via browser settings. If required, you can control the types of content that can be accessed by your employees.

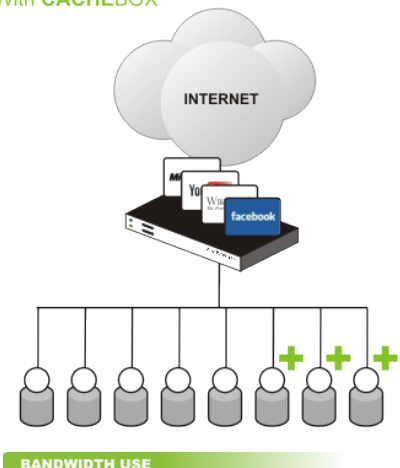
Easy to use, low TCO

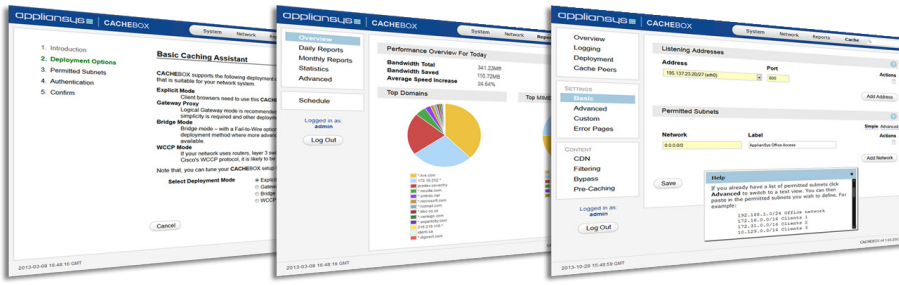
ApplianSys has designed **CACHEBOX** to be quick to deploy, simple to use and easy to maintain. What's more **CACHEBOX** is surprisingly affordable, but value is more than price.

Without **CACHEBOX**



With **CACHEBOX**





Configuration wizards, graphical reporting and online help

“Web pages that are very often accessed within the company download at an incredible speed. And if in doubt, we now have a control list of all visited websites.”

Edicions Bromera, Spain

One branch or many, big or small, there's a CACHEBOX solution for you

CACHEBOX050 and **CACHEBOX100** are best suited to small businesses or branch offices. They offer excellent performance at a low price point.

CACHEBOX230 and **CACHEBOX310** use Solid State Drives (SSD), giving you higher performance. Depending on your type of traffic, the '230' can support more than 5,000 users per appliance at 250Mbps, with '310' supporting up to 10,000 users at 500Mbps. Other vendors only offer this level of performance with bigger, more expensive devices.

In multi-branch companies, **CACHEBOXes** can be deployed as appropriate across individual offices and the network core. They can work together in sibling clusters in the core and in parent-child hierarchies to maximise bandwidth saving and internet performance.

In large deployments, **CACHEBOX Management Console (CACHEBOXcmC)** makes it easy to deploy and remotely manage multiple **CACHEBOXes** across networks. With CMC, a fleet of caches can be managed via a single interface, reducing the administrative workload, improving deployment quality and increasing control.

RANGE

	Usage	Form Factor	*Performance (HTTP Requests Per Second)
CACHEBOX050	Small office	Small Form Factor Desktop Unit	400
CACHEBOX100	Small office	19" 1U Rack-mountable	400
CACHEBOX210	SME/branch office	19" 1U Rack-mountable	1900
CACHEBOX230	Medium enterprise	19" 1U Rack-mountable	2500
CACHEBOX310	Large enterprise / network core	19" 1U Rack-mountable	3600
CACHEBOXCMC	Remote administration of up to 2000+ CACHEBOXes	19" 1U Rack-mountable	Not Applicable

Note: *Peak performance achieved under test conditions. Real life performance limits vary, depending on network and traffic characteristics

FEATURES

Save bandwidth, save money

- Fully featured caching software support for HTTP
- Video caching (YouTube, Metacafe, Vimeo, Dailymotion, Veoh etc)
- Software update caching (MS Windows, Apple, Avast, Kaspersky etc)
- Off-peak pre-caching of content like foreign news/media portals
- Reserve a portion of disk space for permanently storing specific objects

Easy to manage

- Intuitive, secure web administration interface
- Setup and caching 'assistants'
- On-box graphical / scheduled reporting to monitor network / caching performance
- Automated on/off-box backups
- Automated alerting
- Multi-lingual interface available in English, French and Spanish
- Operating system runs from read only Industrial CompactFlash
- SNMP support allows the box to be monitored by standard networking tools
- Supports custom ACLs
- Logging

Flexible deployment

- Supports multiple transparent and explicit deployment modes
- Optional Fail-to-Wire resiliency
- Clustering, load balancing and hierarchies
- WCCP Support (v.2, GRE and Layer 2)
- IP spoofing
- Firewall with NAT forwarding for networking flexibility
- iKVM remote access technology

Browse safely and log activity

- Secure HTTPS and SSH management interface
- MS Active Directory integration via NTLM and Kerberos authentication
- RADIUS/LDAP authentication

“We're getting great bandwidth savings - 40% byte hit ratio and we saw around 80% during a recent round of Apple updates”

Aqib Korai, Network Manager, Liptinfor, Nigeria